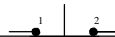


()
 :
 : 10
 : 200
 : 500
 : 1 500
 : 1 ;
 : 30 000
 : 10 000
 : .177" (4.5) SB862; .059" (1.5)
 : SB282;
 : -10°C +70°C

- SB862;
 - SB862;
 - SB282
 - SB862;
 - SB282

					AC 125	AC √250
SB862	— —	SPST	1-2	—	10	5

SPST



AT504M, AT508, 12, AT527M.

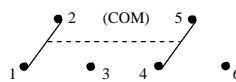
SB862

AT424A

0.205" (5.2)

					AC 125	AC √250
SB282	— —	DPDT	2-1 5-4	2-3 5-6	6A	3A

DPDT



AT504M, AT508, 12, AT527M.

SB282

AT423A;
AT423C

0.272" (6.9)